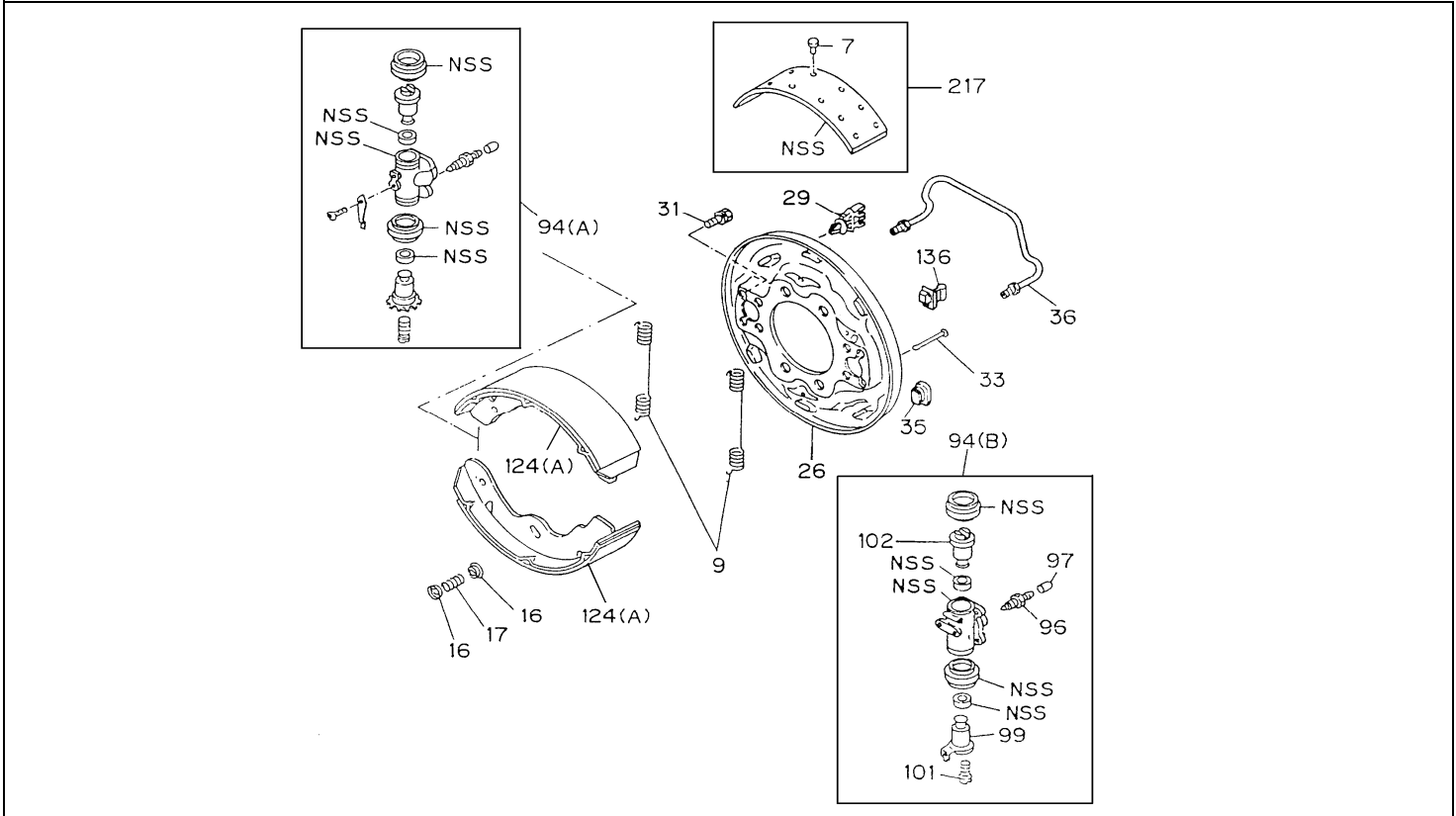


PART INFORMATION

No : 009 / PI / PART / IAMI / II / 2013
Tanggal : 28 Feb 2013
Perihal : Up date Items Fig No 3-05

FIG.NO : 3-05 RR WHEEL BRAKE



NO	PART NEW	DESCRIPTION	KEY NO.	ENGINE	APPLIED DATE	RETAIL	REMARKS
1	8-97081 150-0	SPRING ; RETURN, BRAKE SHOE	9	4JB1-TC	0702-	39.000	NHR55-T/B/B R16 EURO 2
2	8-97078 739-0	SPRING ; RETURN, BRAKE SHOE	9	4JB1-TC	0702-	#N/A	NKR55-T/B/B R16/LWB/LWB R16
3	5-09583 118-0	SPRING ; RETURN, BRAKE SHOE	9	4JB1-TC	0808-	46.000	NKR55L-6T EURO 2
4	8-97022 087-0	SPRING ; RETURN, BRAKE SHOE	9	4HG1-T	0702-	40.000	NKR7T-T/THD EURO 2
5	9-47162 033-0	CUP ; SHOE HOLDING	16	4JB1-TC	0702-	6.000	NHR55/NHR55-T/B EURO 2
6	9-47165 096-0	CUP ; SHOE HOLDING	16	4HG1-T	0702-	7.500	NKR55L-6T, NKR7T-T/THD E2
7	9-09940 989-1	SPRING ; SHOE HOLD DOWN	17	4JB1-TC	0702-	8.500	NHR55/NHR55-T/B EURO 2
8	5-09580 101-1	SPRING ; SHOE HOLD DOWN	17	4HG1-T	0702-	14.000	NKR55L-6T, NKR7T-T/THD E2
9	8-97081 138-0	PLATE ; BACK, RR BRK RH	26	4JB1-TC	0702-	650.000	NHR55-T/B/B R16 EURO 2
10	8-97093 934-0	PLATE ; BACK, RR BRK RH	26	4JB1-TC	0702-	#N/A	NKR55-T/B/B R16/LWB/LWB R16
11	8-97078 605-0	PLATE ; BACK, RR BRK RH	26	4JB1-TC	0808-	870.000	NKR55L-6T EURO 2
12	8-97223 573-0	PLATE ; BACK, RR BRK RH	26	4HG1-T	0702-	830.000	NKR7T-T/THD EURO 2
13	8-97081 139-2	PLATE ; BACK, RR BRK LH	26	4JB1-TC	0702-	650.000	NHR55-T/B/B R16 EURO 2
14	8-97093 935-0	PLATE ; BACK, RR BRK LH	26	4JB1-TC	0702-	#N/A	NKR55-T/B/B R16/LWB/LWB R16
15	8-97078 606-0	PLATE ; BACK, RR BRK LH	26	4JB1-TC	0808-	870.000	NKR55L-6T EURO 2
16	8-97223 574-0	PLATE ; BACK, RR BRK LH	26	4HG1-T	0702-	830.000	NKR7T-T/THD EURO 2

PART INFORMATION

No : **009 / PI / PART / IAMI / II / 2013**

Tanggal : **28 Feb 2013**

Perihal : **Up date Items Fig No 3-05**

NO	PART NEW	DESCRIPTION	KEY NO.	ENGINE	APPLIED DATE	RETAIL	REMARKS
17	8-97022 086-2	CLIP ; PIPE, BRAKE	29	4HG1-T	0702-	30.000	NKR7T-T/THD EURO 2
18	9-09602 119-1	BOLT ; RR WHEEL CYL	31	4JB1-TC	0702-	7.500	NHR55-T/B/B R16 EURO 2
19	5-09030 036-1	BOLT ; RR WHEEL CYL	31	4JB1-TC	0702-	10.500	NKR55-T/B/B R16/LWB/LWB R16
20	5-09030 016-1	BOLT ; RR WHEEL CYL	31	4JB1-TC	0808-	10.500	NKR55L-6T EURO 2
21	8-97081 305-0	BOLT ; RR WHEEL CYL	31	4HG1-T	0702-	13.000	NKR7T-T/THD EURO 2
22	9-47162 045-0	PIN ; SHOE HOLD DOWN	33	4JB1-TC	0702-	8.500	NHR55-T/B/B R16 EURO 2
23	9-47162 607-0	PIN ; SHOE HOLD DOWN	33	4JB1-TC	0702-	7.500	NKR55-T/B/B R16/LWB/LWB R16
24	5-47162 001-0	PIN ; SHOE HOLD DOWN	33	4JB1-TC	0808-	14.000	NKR55L-6T EURO 2
25	8-97022 089-0	PIN ; SHOE HOLD DOWN	33	4HG1-T	0702-	11.500	NKR7T-T/THD EURO 2
26	8-94134 650-1	PIPE ; OIL, RR BRAKE	36	4JB1-TC	0702-	85.000	NHR55-T/B/B R16 EURO 2
27	8-94128 192-0	PIPE ; OIL, RR BRAKE	36	4JB1-TC	0702-	#N/A	NKR55-T/B/B R16/LWB/LWB R16
28	8-94154 916-0	PIPE ; OIL, RR BRAKE	36	4JB1-TC	0808-	105.000	NKR55L-6T EURO 2
29	8-97079 847-A	PIPE ; OIL, RR BRAKE	36	4HG1-T	0702-	14.500	NKR7T-T/THD EURO 2
30	8-97179 335-0	CYLINDER ; WHEEL,RR BRAKE	94 (A)	4JB1-TC	0702-	540.000	(A) FRT RH, NHR55-T/B/B R16 E2 NKR55-T/B/ LWB/LWB R16 E2
31	8-97179 350-0	CYLINDER ; WHEEL,RR BRAKE	94 (A)	4JB1-TC	0808-	690.000	(A) FRT RH, NKR55L-6T E2
32	8-97139 822-0	CYLINDER ; WHEEL,RR BRAKE	94 (A)	4HG1-T	0702-	650.000	(A) FRT RH, NKR7T-T/THD E2
33	8-97179 337-0	CYLINDER ; WHEEL,RR BRAKE	94 (A)	4JB1-TC	0702-	510.000	(A) FRT LH, NHR55-T/B/B R16 E2 NKR55-T/B/ LWB/LWB R16 E2
34	8-97179 352-0	CYLINDER ; WHEEL,RR BRAKE	94 (A)	4JB1-TC	0808-	760.000	(A) FRT LH, NKR55L-6T E2
35	8-97139 825-0	CYLINDER ; WHEEL,RR BRAKE	94 (A)	4HG1-T	0702-	610.000	(A) FRT LH, NKR7T-T/THD E2
36	8-97179 336-0	CYLINDER ; WHEEL,RR BRAKE	94 (B)	4JB1-TC	0702-	510.000	(B) RR RH, NHR55-T/B/B R16 E2 NKR55-T/B/ LWB/LWB R16 E2
37	8-97179 351-0	CYLINDER ; WHEEL,RR BRAKE	94 (B)	4JB1-TC	0808-	690.000	(B) RR RH, NKR55L-6T E2
38	8-97139 824-0	CYLINDER ; WHEEL,RR BRAKE	94 (B)	4HG1-T	0702-	650.000	(B) RR RH, NKR7T-T/THD E2
39	8-97179 337-0	CYLINDER ; WHEEL,RR BRAKE	94 (B)	4JB1-TC	0702-	510.000	(B) RR LH, NHR55-T/B/B R16 E2 NKR55-T/B/ LWB/LWB R16 E2
40	8-97179 352-0	CYLINDER ; WHEEL,RR BRAKE	94 (B)	4JB1-TC	0808-	760.000	(B) RR LH, NKR55L-6T E2
41	8-97139 825-0	CYLINDER ; WHEEL,RR BRAKE	94 (B)	4HG1-T	0702-	610.000	(B) RR LH, NKR7T-T/THD E2
41	8-97287 778-0	SHOE ; BRAKE, RR	124	4JB1-TC	0808-	540.000	(A) PIECE, NKR55-6T EURO 2
42	5-87831 801-0	LINING K IT ; FRT BRAKE	217	4JB1-TC	0808-	1.075.000	NKR55-6T EURO 2
	NOTE :	(#N/A) HARGA MENYUSUL					